
PURPOSE



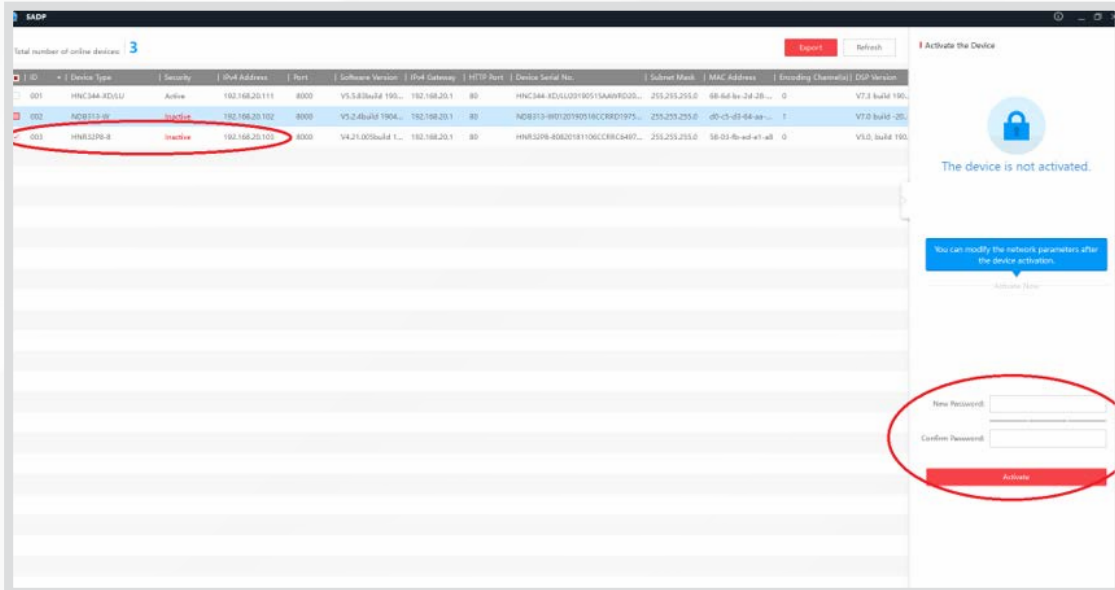
TECHNICAL MANUAL

PURPOSE AV NVR SETUP

STAUB
ELECTRONICS

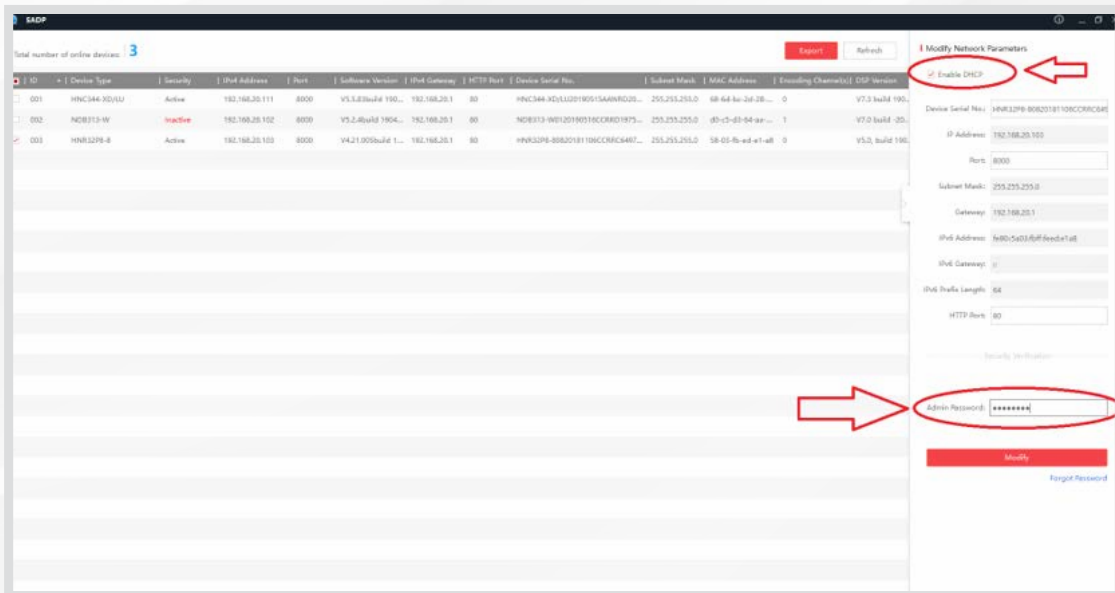
Provided by the Staub technical services department

STEP 1: OPEN SADP SOFTWARE



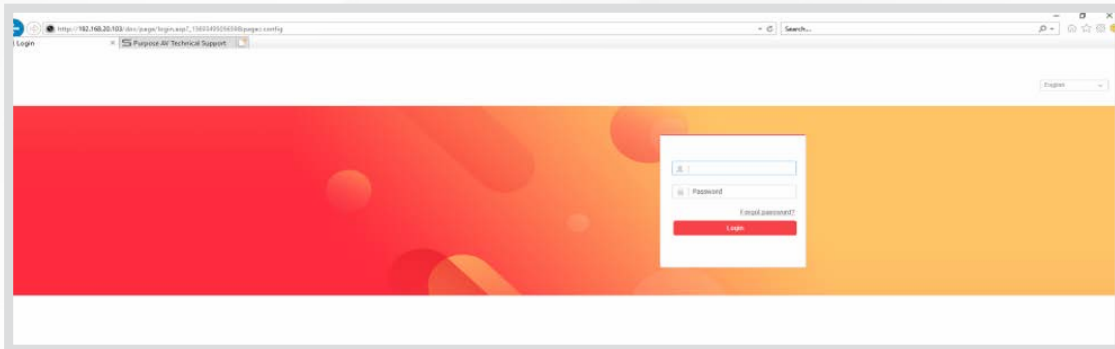
Open the SADP Search tool and locate the PAV NVR. In the right side panel, enter the desired password for the NVR. This password will also be sent to any cameras currently connected to the POE ports on the rear, as well as any future cameras connected to the POE ports of the NVR.

STEP 2: SET THE NVR TO DHCP OR STATIC



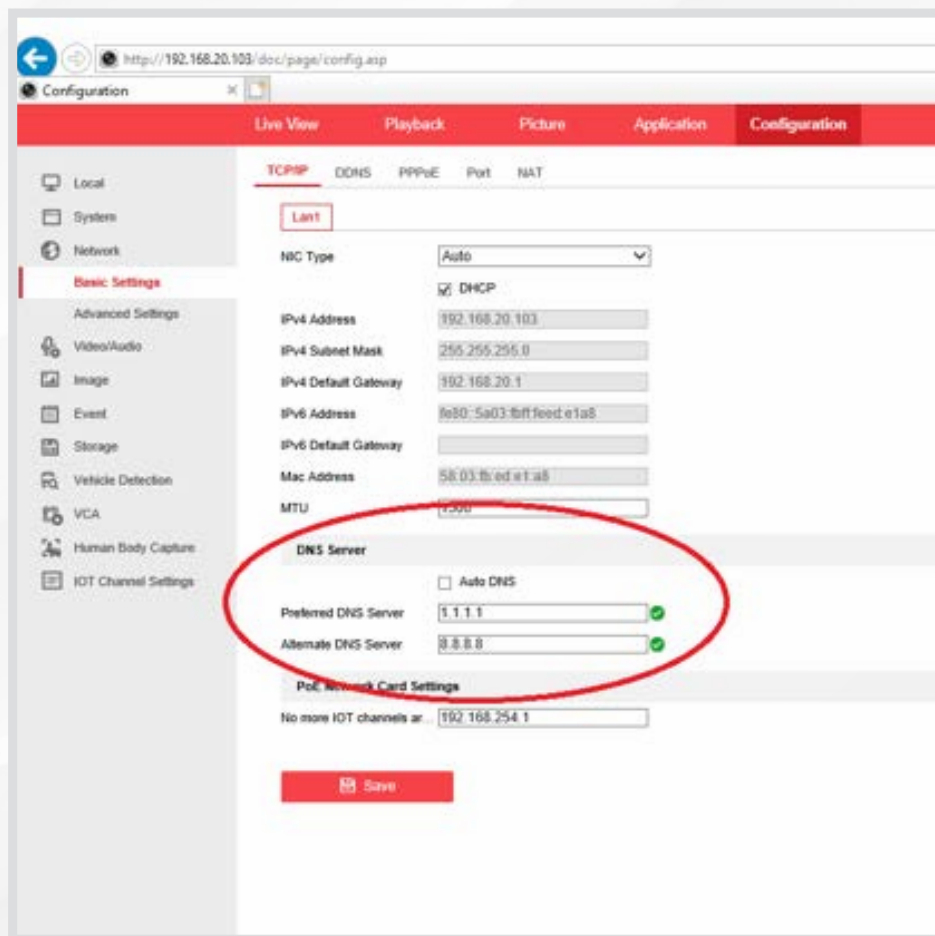
Open the SADP Search tool and locate the PAV NVR. In the right side panel, enter the desired password for the NVR. This password will also be sent to any cameras currently connected to the POE ports on the rear, as well as any future cameras connected to the POE ports of the NVR.

STEP 3: LOGIN TO THE NVR'S WEB GUI



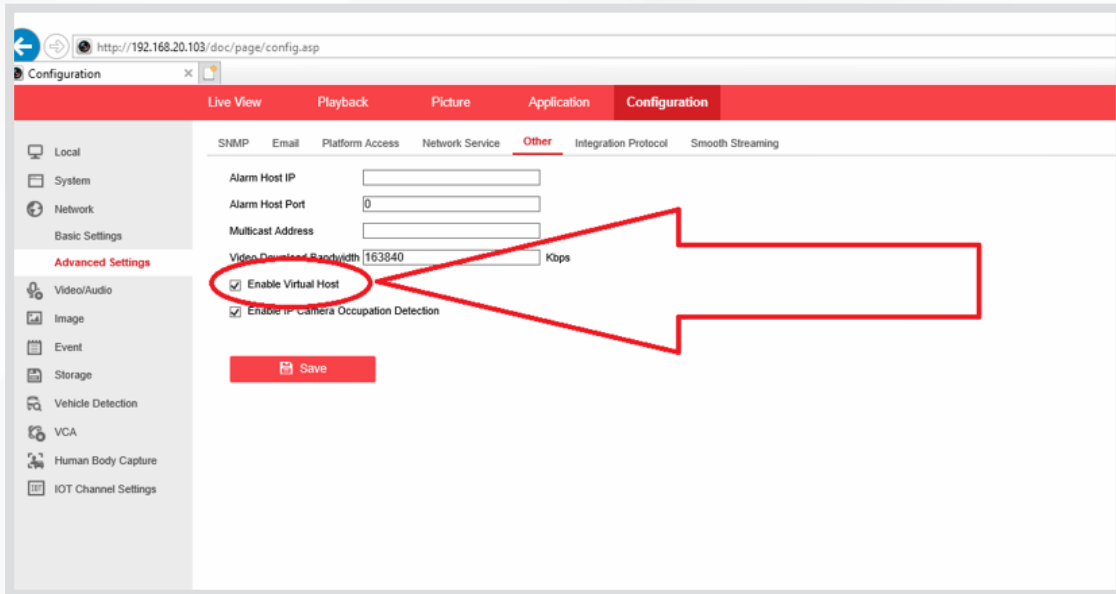
Enter the IP address of the NVR into Internet Explorer to access the web interface. The default user-name will be "admin" with the password that was previously setup with the SADP tool.

STEP 4: ADJUST NETWORK SETTINGS



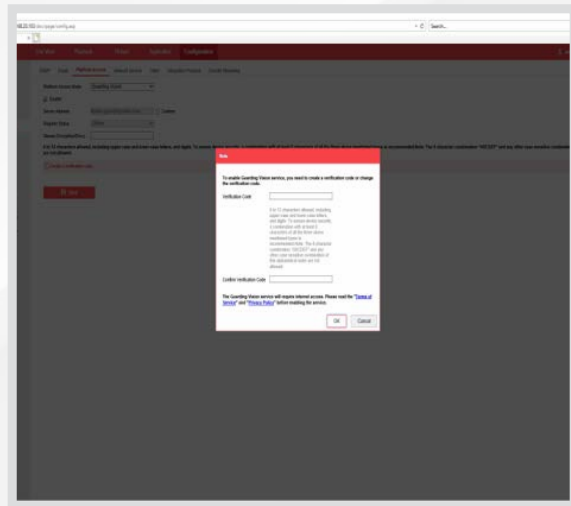
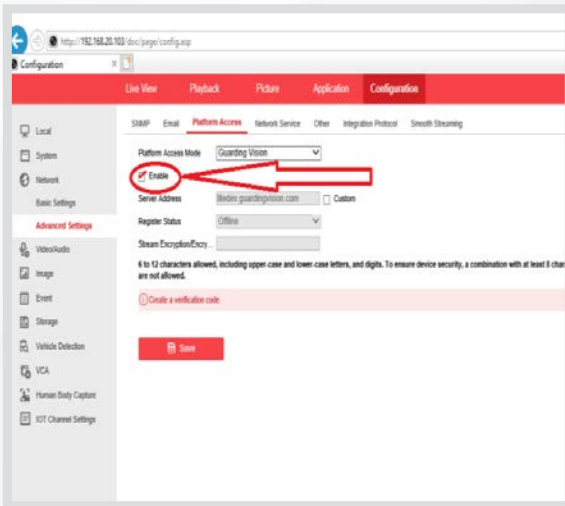
Manually set the DNS server to 1.1.1.1 and 8.8.8.8 for optimal performance.

STEP 5: ENABLE VIRTUAL HOST



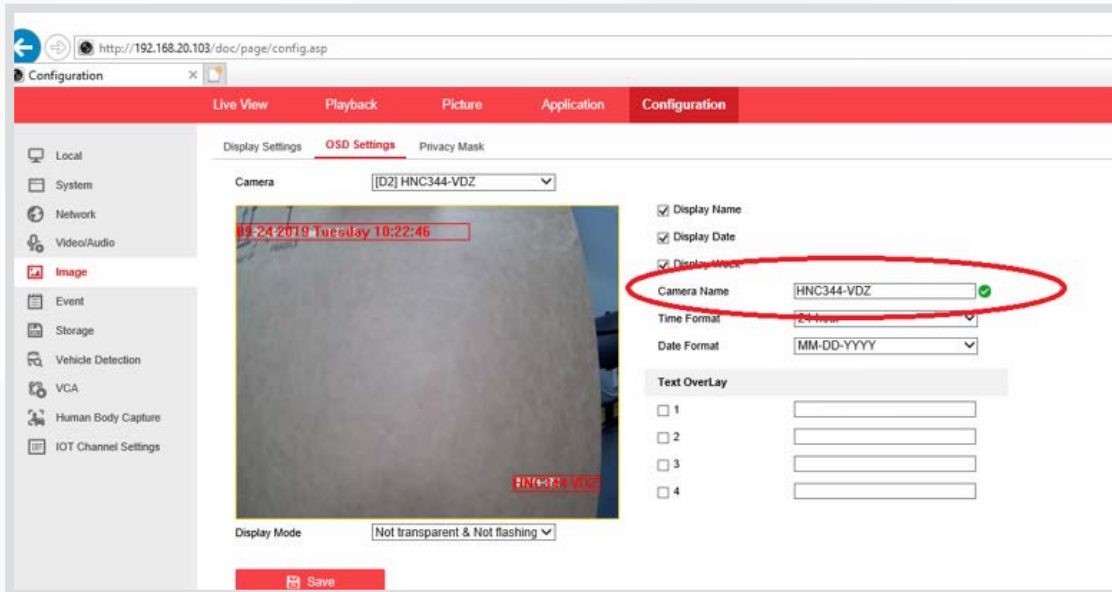
Enable the “Virtual Host” setting to allow visibility of all cameras connected to the POE switch on the NVR.

STEP 6: ENABLE CLOUD ACCESS PARAMETERS



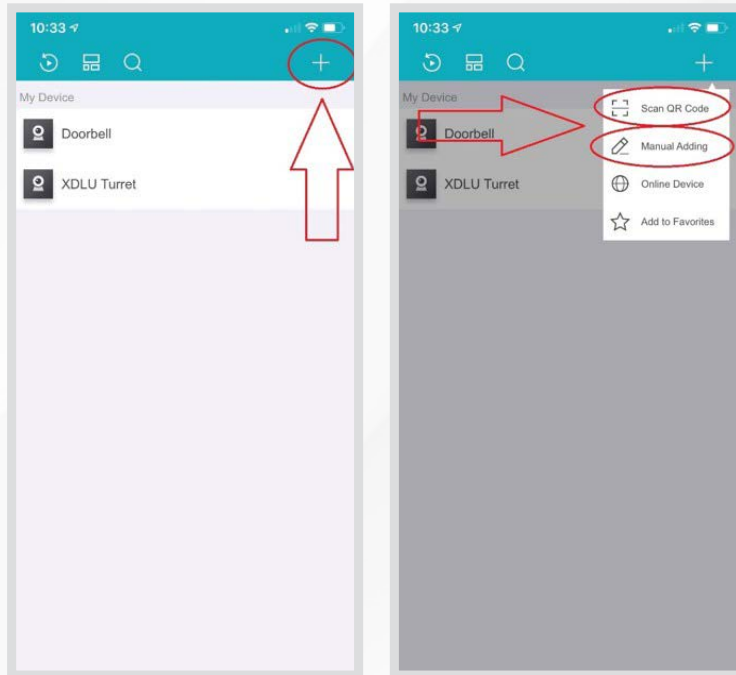
Enable Guarding Vision platform access, and enter a password for the encryption (the NVR password is recommended to be used for ease of use).

STEP 7: RENAMING CAMERAS



Cameras can easily be renamed under the “Image” tab in the web interface.

GUARDING VISION APP SETUP

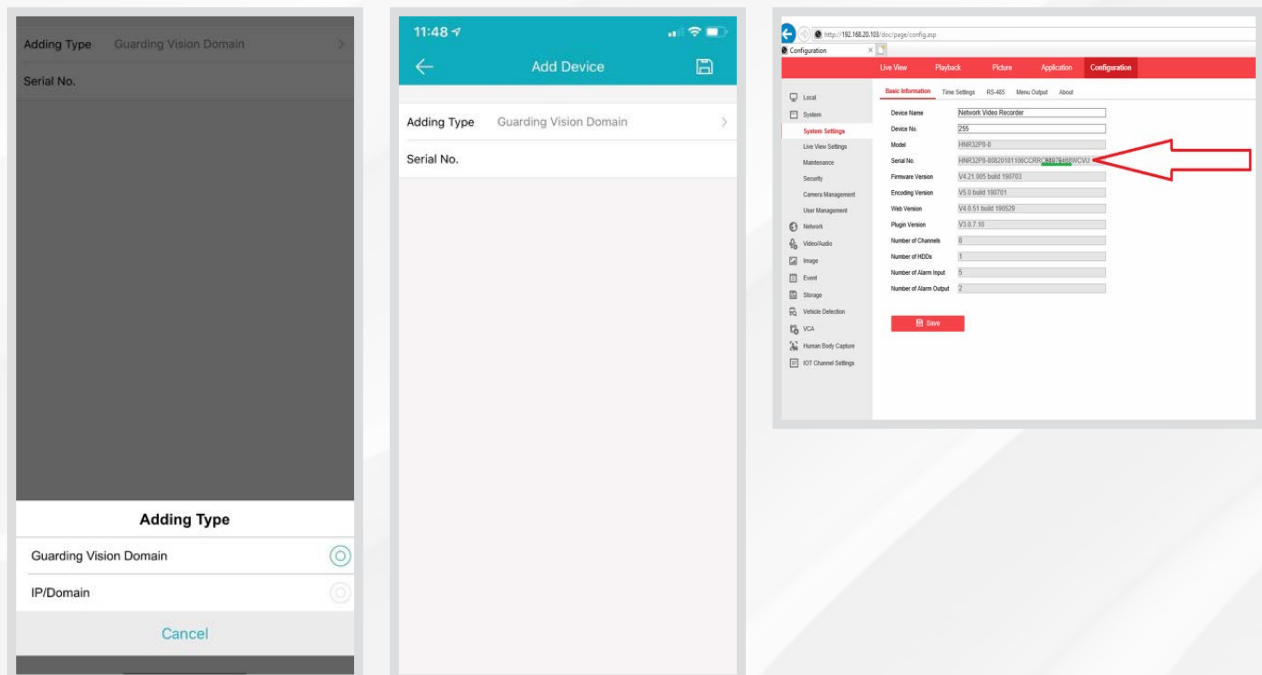


For setup of the Guarding Vision app you can add the NVR with one of two methods:

1. Via the QR code located on the bottom of the NVR
2. Via the Serial Number located either on the box, bottom of the NVR, or located in the web interface

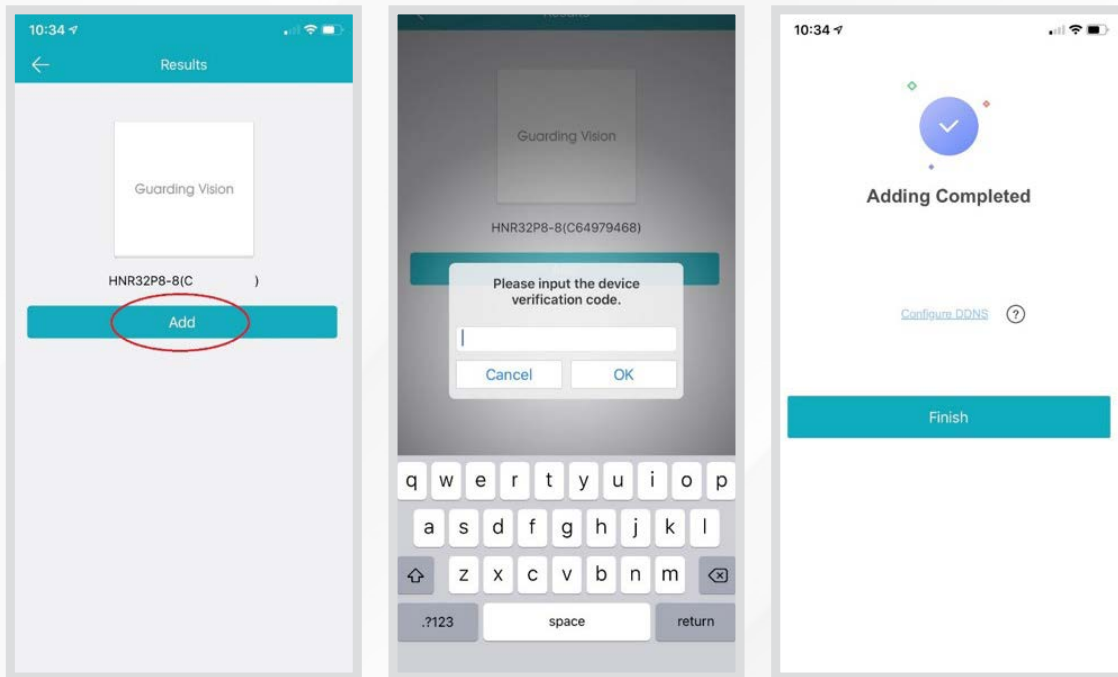
** Note: It is recommended to use the end users email address for account setup during this process

GUARDING VISION APP SETUP (CLOUD)



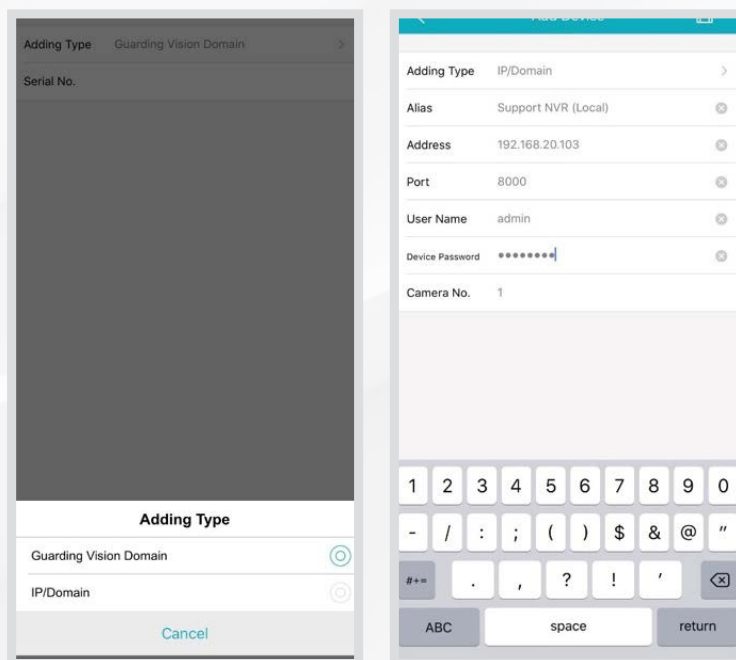
For cloud adding of the system, select "Guarding Vision Domain." You will then need to input the serial number of the recorder. The serial number in the recorder will be the last 9 digits prior to the "WCVU."

GUARDING VISION APP SETUP (CLOUD)



After entering the serial number OR scanning the QR code you will be prompted for a “verification code.” This is the code you entered in the platform access menu of the NVR (typically the NVR password).

GUARDING VISION APP SETUP (LOCAL)



The app can also be configured for “local” viewing. This configuration will require the NVR network information to be inputted rather than the serial number and verification code. This is recommended for installer viewing and calibration on site.